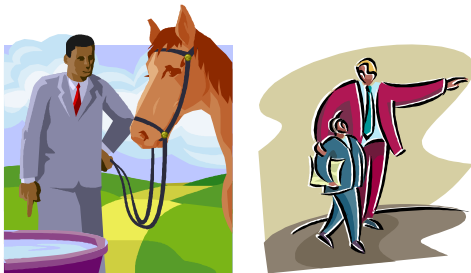


DEPARTMENT J-33 YOUTH LEADERSHIP (SELF-DETERMINED IN-DEPTH)



Michelle Klefstad

PREMIUMS FOR ALL ENTRIES

Blue \$2.00 Red \$1.75 White \$1.50 Pink \$1.25

All exhibits will be conference judged on Tuesday of Fair Week from 1-6 pm in the Youth Expo Building

DIVISION A: FLEXIBLE IN-DEPTH EDUCATIONAL PROJECT DISPLAY

- All SELF-DETERMINED projects should be entered in categories listed below.
- Each in-depth educational project display should be confined to one main idea related to a project area in which the member is enrolled, and should not duplicate exhibit efforts already provided for in other project departments of the fair.
- The underlying principle of the "in-depth" project display is to encourage members to attempt to project study in-depth of their own interest and choosing, and later to tell or show in a display the learning gained. Each in-depth project display should be designed to tell the County Fair Public the member's story of their project study. The display may include a mobile, a model, photos, something moving, actual articles or posters, or a likely combination of display methods. All in-depth projects should contain a detailed story/report that demonstrates what the exhibitor has learned.

CLASS NUMBER

1. In-depth Animal Science Display
2. In-depth Livestock or Crop Marketing Display
3. In-depth Plant Science Display
4. In-depth Food Science Display
5. In-depth Natural Resources Display

6. In-depth Consumer Education Display
7. In-depth Career Exploration Display
8. In-depth Use of Design, Color, Texture Display
9. In-depth International Study Display
10. In-depth Money Management Display
11. In-depth Record Book
12. Any other in-depth project display

DIVISION B: RECYCLING PROJECTS

CLASS NUMBER

1. A display on recycling of products
2. A poster showing how to recycle or the importance of recycling
3. A map of your home and/or yard showing your waste reduction, recycling and composting efforts
4. A home recycling exhibit
5. A farm recycling exhibit
6. An exhibit on farm composting
7. An exhibit showing how to make animal bedding from scrap paper or the pros and cons of animal bedding made from paper
8. A model landfill or incinerator (3-D) with an explanation of how it works